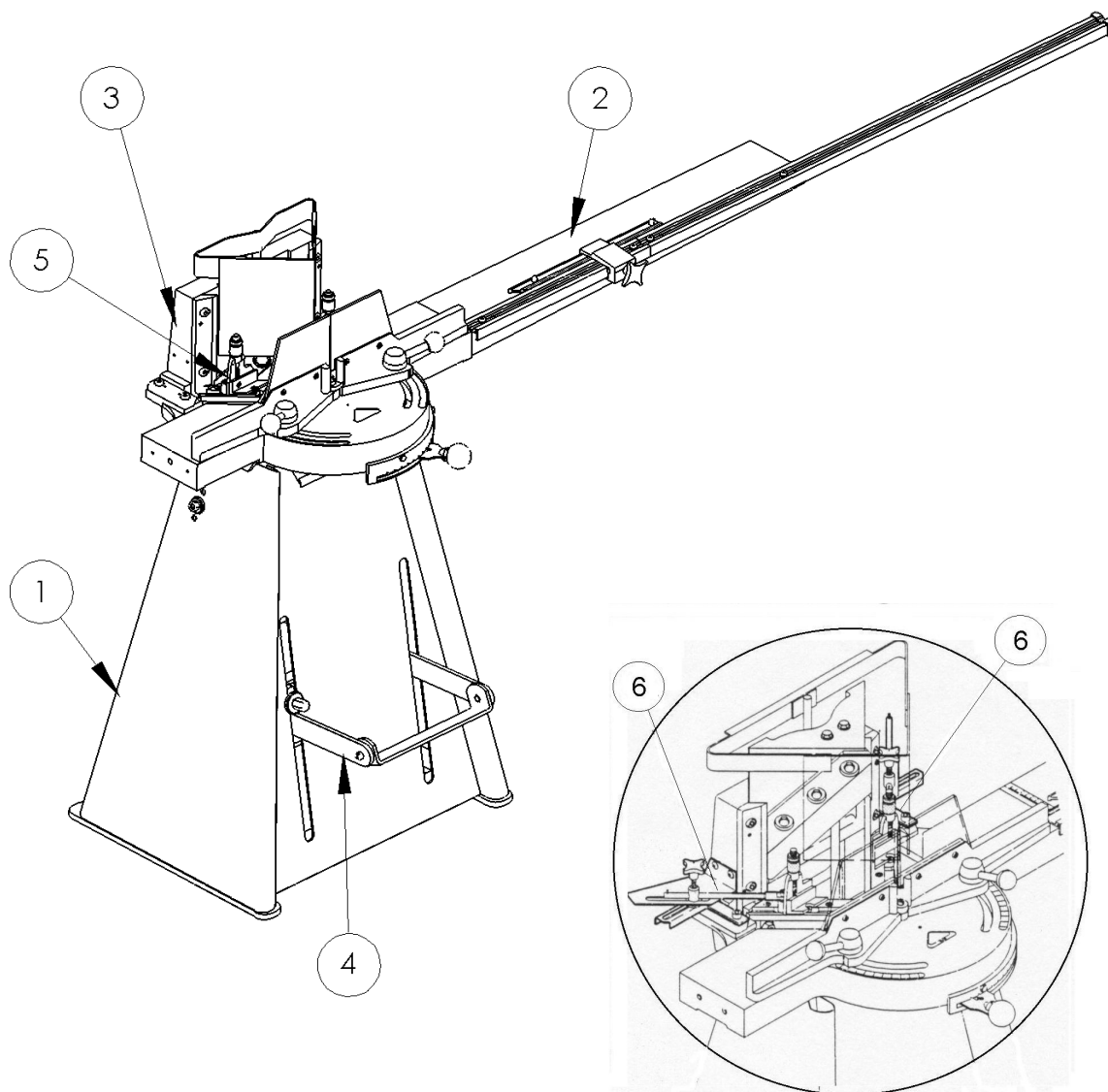
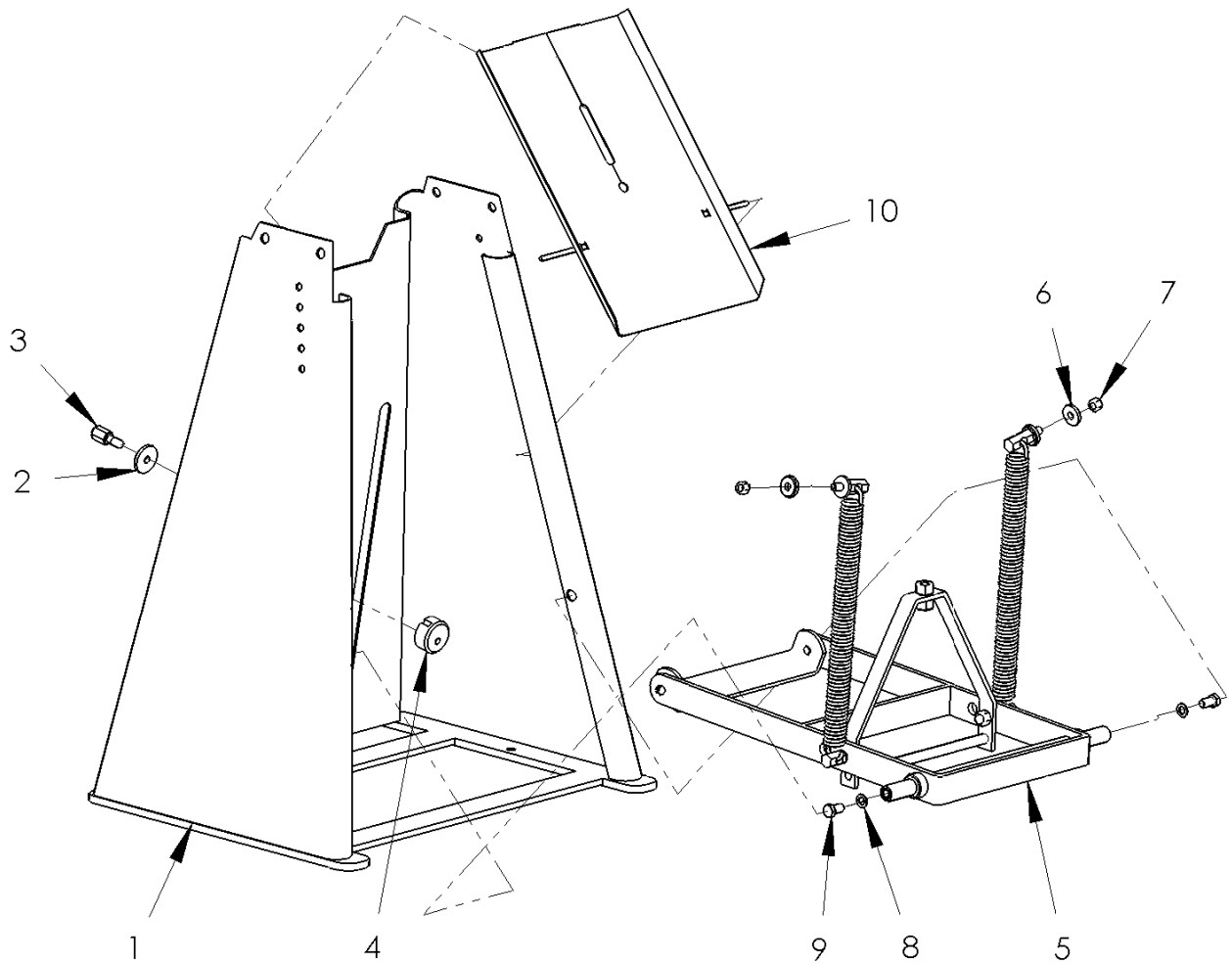


Oversigt - Index – Übersicht



Pos.	Betegnelse	Designation	Bezeichnung	Side/Page/Seite
1	Grundmaskine	Basic Machine	Grundmaschine	I-2
2	Bord, komplet	Table, complete	Tisch, komplett	I-3
3	Knivhovedenhed	Knife Block Unit	Messerkopf-Einheit	I-4
4	Drivmekanisme	Drive equipment	Antriebsmechanik	I-5
5	Falsstøtter	Rebate Supports	Falzauflagen	I-6
	Ekstraudstyr	Accessories	Zusatzrüstung	
6	Falsstøtter, autom.	Rebate Support, autom.	Falzauflage, automatisch	L-2

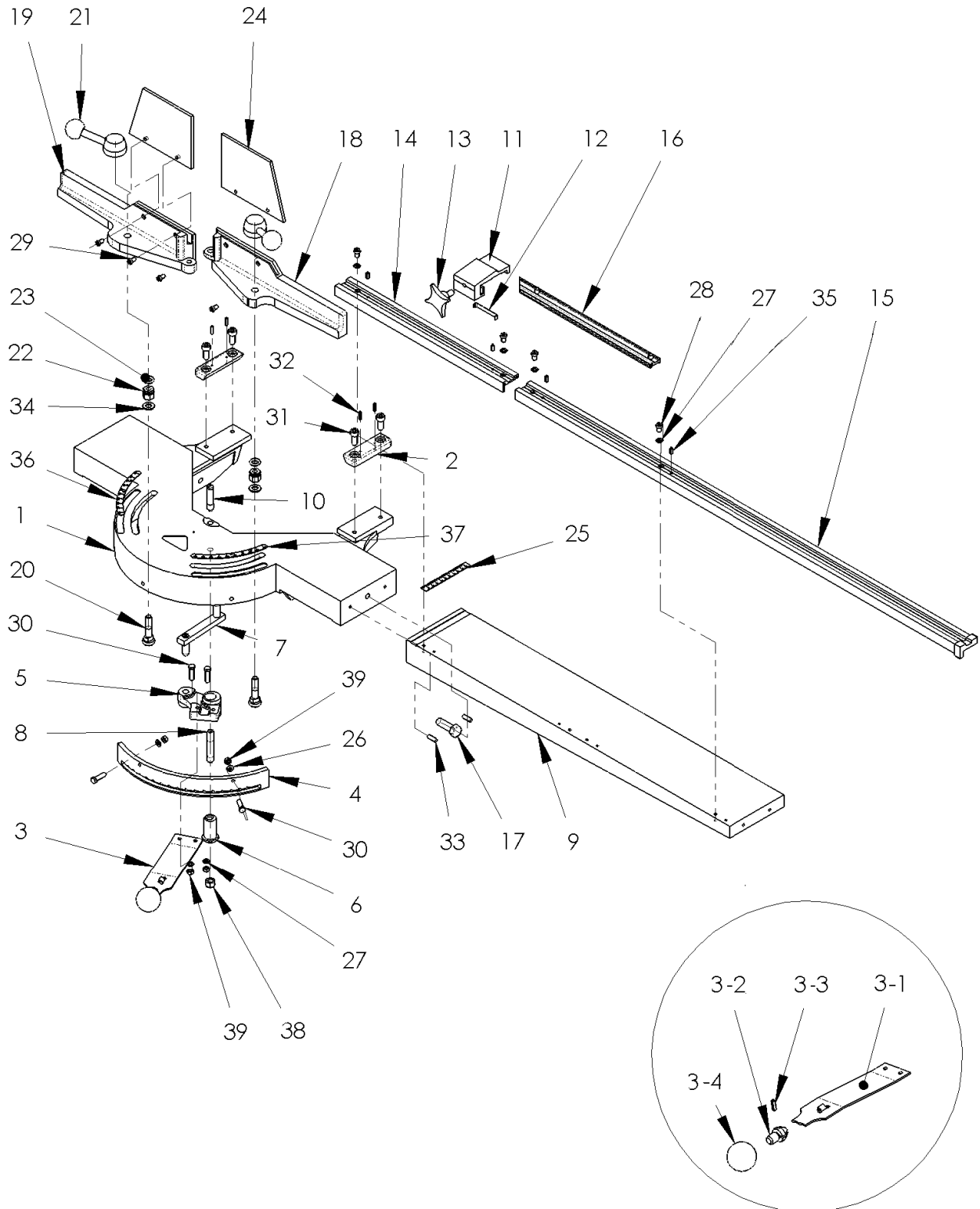
Basic machine – Grundmaschine



Basic Machine - Grundmaschine

Pos.	Art. No.	Designation	Bezeichnung
1		Frame	Gestell
2		Washer	Scheibe
3		Screw	Schraube
4		Height stop	Höhenbegrenzung
5		Drive equipment, complete	Antriebsmechanik, komplett
6		Washer	Scheibe
7		Hexagon nut	Sechskantmutter
8		Washer	Scheibe
9		Hexagon screw	Sechskantschraube
10		Waste chute	Rutsche

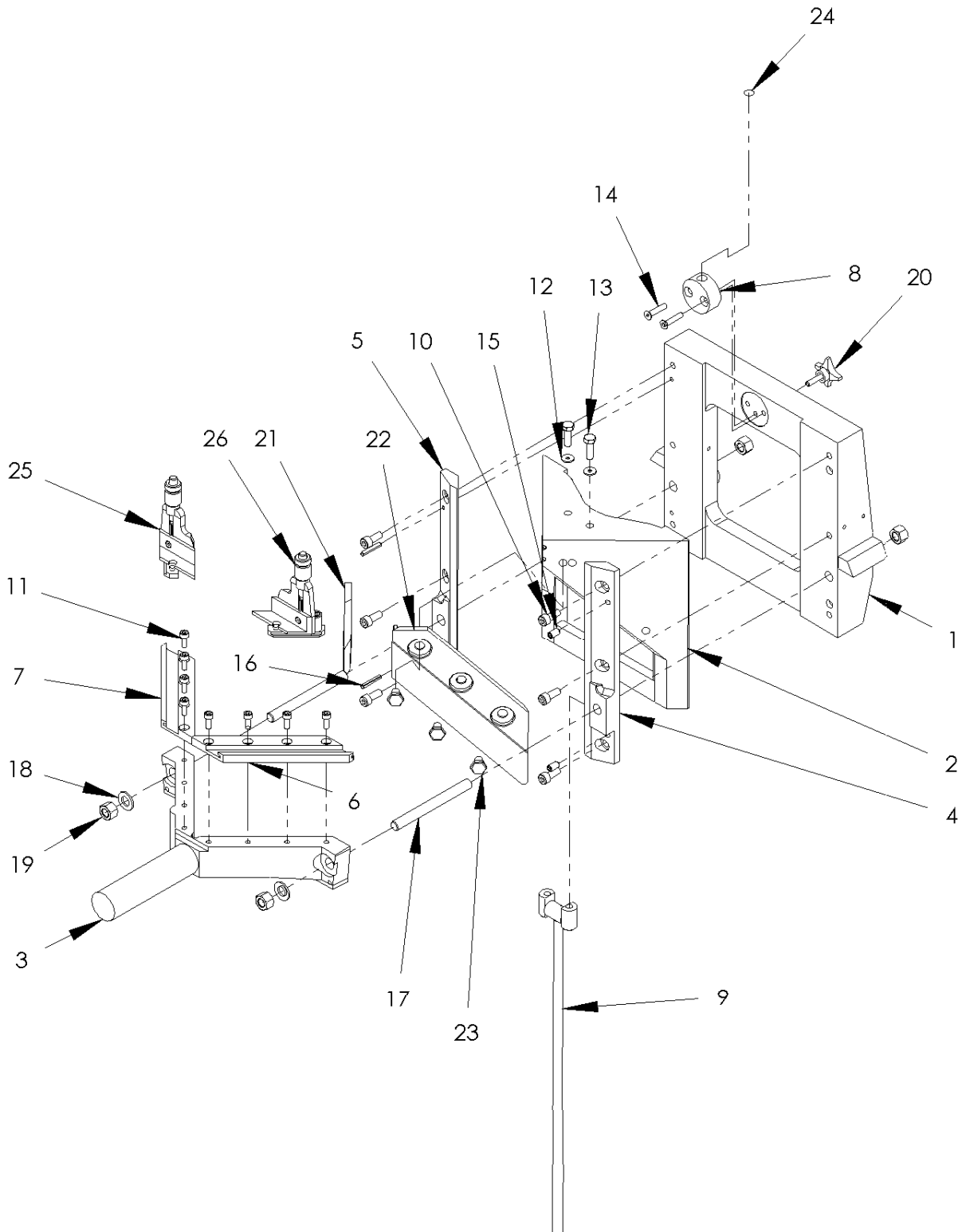
Table, complete – Tisch, komplett



Table, complete – Tisch, komplett

Pos	Art. Nr.	Designation	Bezeichnung
1		Table	Tisch
2		Short Guide Rail	Steuerleiste
3		Hand Lever, complete	Stellhebel, komplett
3-1		Hand Lever	Handgriff
3-2		Ball Holder	Kugelhalter
3-3		Clamping Pin	Spannstift
3-4		Ball	Kugelknopf
4		Tooth Arc	Zahnbogen
5		Bell Crank Lever	Exzenterhebel
6		Bushing	Buchse
7		Tie Rod	Zughebel
8		Pivot	Stützbolzen
9		Table extension	Tischverlängerung
10		Steering Pivot	Steuerzapfen
11		Stop block	Endanschlag
12		Spring	Feder
13		Star wheel	Sterngriff
14		Divided beam	Meßschiene
15		Divided beam	Meßschiene
16		Stop beam	Anschlagschiene
17		Hexagon screw	Sechskantschraube
18		Fence	Anschlagleiste
19		Fence	Anschlagleiste
20		Bolt	Bolzen
21		Handle (spanner), complete.	Handgriff komplett
22		Hexagon nut	Sechskantmutter
23		O-ring	O-Ring
24		Safety guard	Unfallschutz
25		Measuring Tape	Meßband
26		Spring Washer	Federscheibe
27		Washer	Scheibe
28		Socket Head Screw	Zylinderschraube
29		Socket Head Screw	Zylinderschraube
30		Hexagon Bolt	Sechskantschraube
31		Socket Head Screw	Zylinderschraube
32		Clamping Pin	Spannstift
33		Notched pin	Kerbstift
34		Washer	Scheibe
35		Clamping Pin	Spannstift
36		Measuring Tape	Meßband
37		Measuring Tape	Meßband
38		Hexagon Nut	Sechskantmutter
39		Hexagon Nut	Sechskantmutter

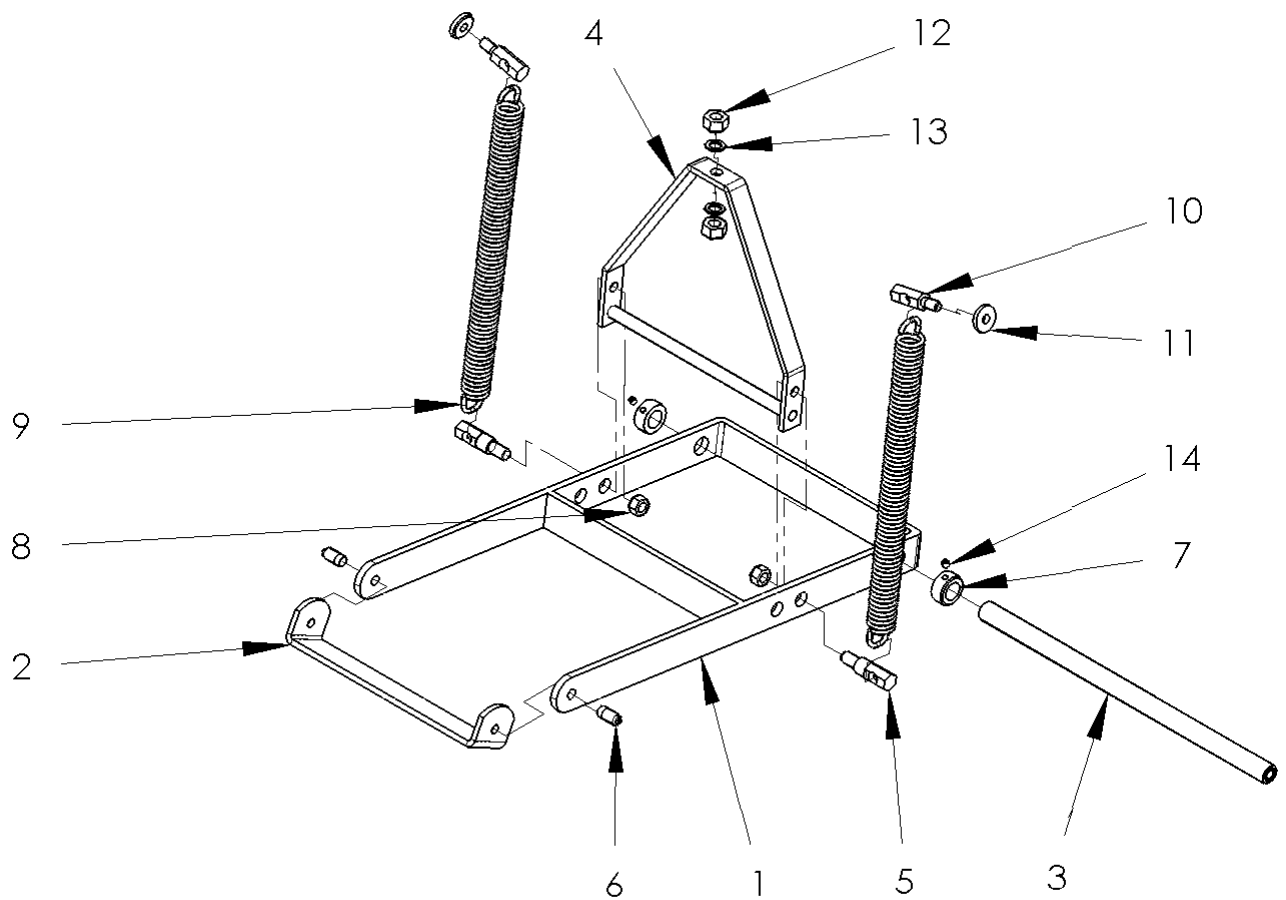
Knife Block Unit - Messerkopf-Einheit



Knife Block Unit - Messerkopf-Einheit

Pos	Designation	Bezeichnung
1	Slide Frame	Schlittenrahmen
2	Knife Block	Messerkopf
3	Cross	Kreuzstück
4	Long Guide Rail	Steuerleiste
5	Long Guide Rail	Steuerleiste
6	Bottom Knife	Untermesser
7	Bottom Knife	Untermesser
8	Clamping Device	Spannstück
9	Draw Bar	Verbindungsstange
10	Countersunk Screw	Schraube, versenkt
11	Cylinder Screw	Zylinderschraube
12	Washer	Scheibe
13	Hexagon Screw	Sechskantschraube
14	Countersunk Screw	Senkschraube
15	Clamping Pin	Spannstift
16	Clamping Pin	Spannstift
17	Stud	Stiftschraube
18	Washer	Scheibe
19	Hexagon Nut	Sechskantmutter
20	Star Wheel	Sterngriff
21	Knife	Messer
22	Knife	Messer
23	Blade Bolt	Sechskantschraube
24	Safety Guard, complete	Schutzschirm, kompl.
25		
26	Rebate Support, compl.	Falzauflage, kompl.

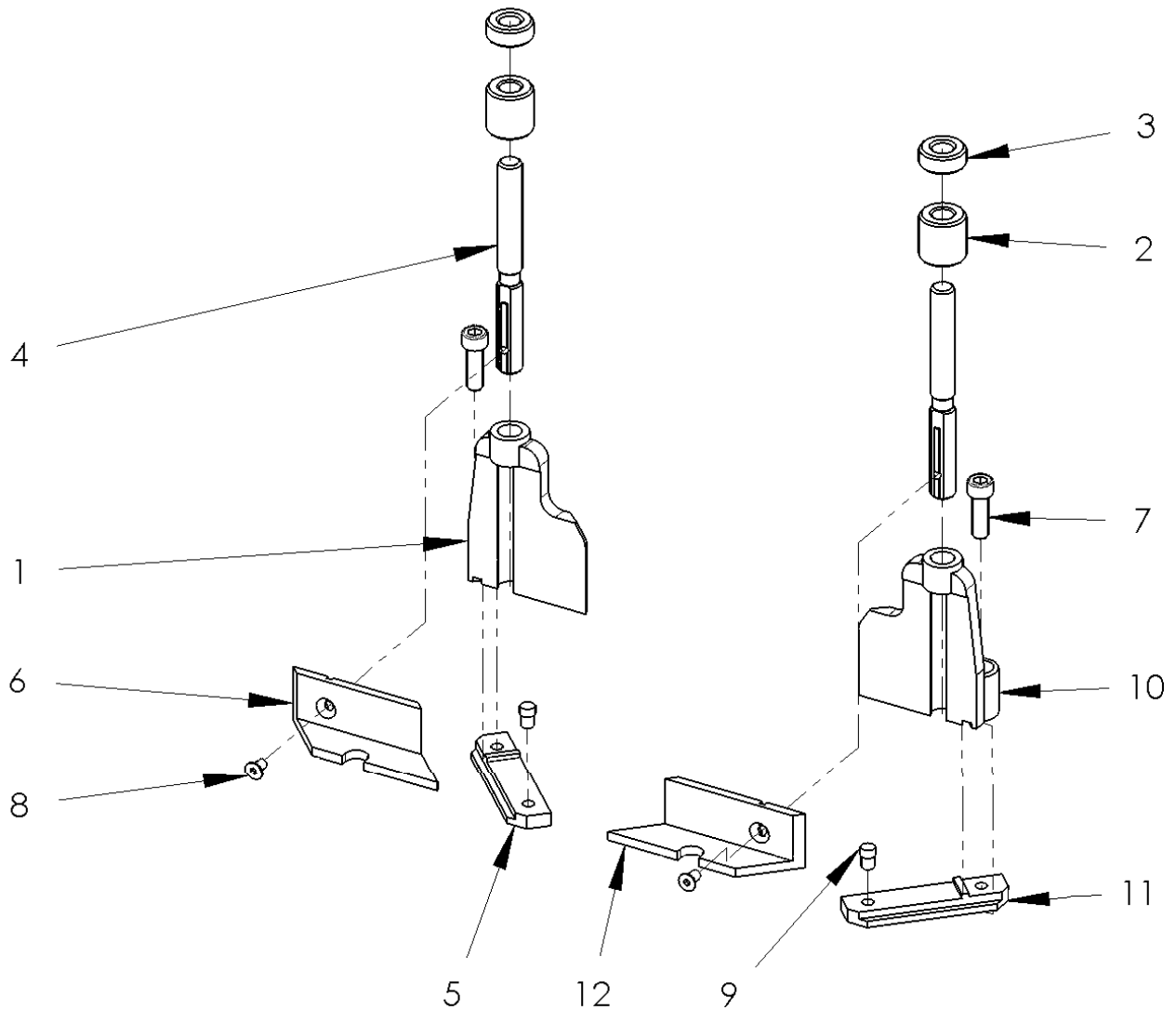
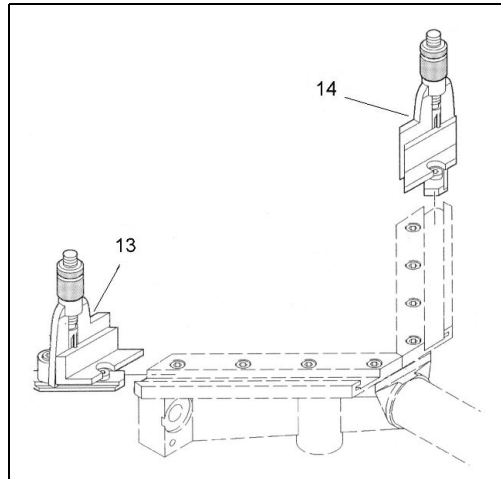
Drive Equipment - Antriebsmechanik



Drive Equipment - Antriebsmechanik

Pos	Art. No.	Designation	Bezeichnung
1		Foot pedal tipper	Fußhebel
2		Pedal	Pedal
3		Shaft	Achse
4		Draw bow, complete	Zugbügel, komplett
5		Draw bow holder	Zugbügelhalter
6		Pivot	Zapfenschraube
7		Set collar	Stelling
8		Hexagon nut	Sechskantmutter
9		Extension spring	Zugfeder
10		Spring holder	Federhalter
11		Washer	Scheibe
12		Hexagon nut	Sechskantmutter
13		Washer	Scheibe
14		Grub screw	Gewindestift

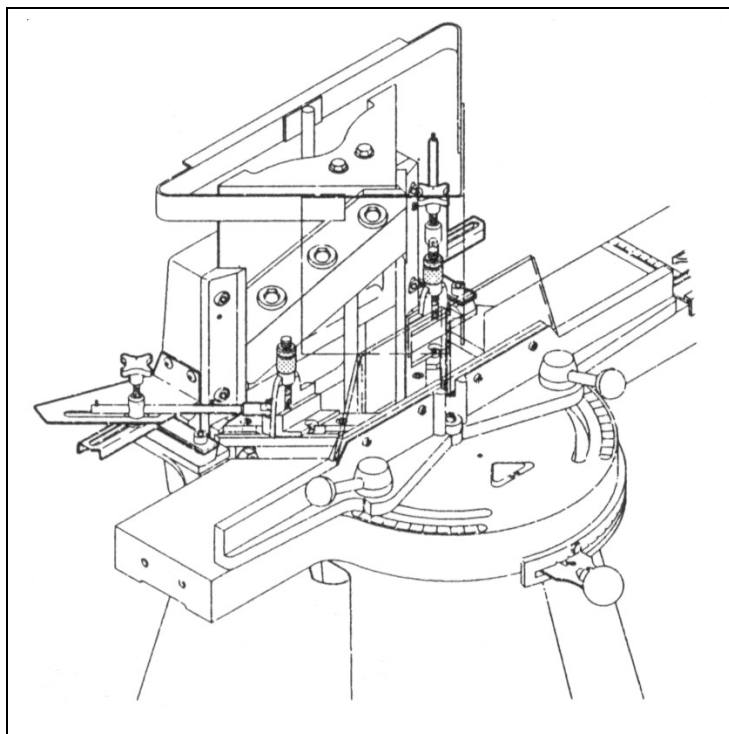
Rebate Support - Falzauflagen



Rebate Support - Falzauflagen

Pos.	Art. No.	Designation	Bezeichnung
1	DAN21403403V	Holder	Halter
2	DAN80233603	Knurled Nut	Rändelmutter
3	DAN80243703	Knurled Lock-nut	Rändelmutter
4	DAN12503903	Pin f. rebate support	Zapfen f. Falzauflagen
5	DAN12203003V	Bottom Part	Unterteil
6	DAN12203203V	Angle Iron	Winkelstahl
7	DAN50006020	Cylinder Screw	Zylinderschraube
8	DAN49004010	Countersunk Screw	Schraube, versenkt
9	DAN12300010	Pin	Zapfen
10	DAN21403403H	Holder	Halter
11	DAN12203003H	Bottom Part	Unterteil
12	DAN12203203H	Angle Iron	Winkelstahl
13	2135	Rebate Support compl.	Falzauflage kompl.
14			

Automatic Rebate Support Attachment.



The automatic rebate support attachment is available as an accessory.

The automatic rebate support attachment is ideal for series production of frames.

With this accessory, the rebate supports automatically return to the adjusted width after each cutting cycle. Manual resetting is therefore eliminated.

The rebate supports are adjusted both to the width of the moulding and the height of the rebate.

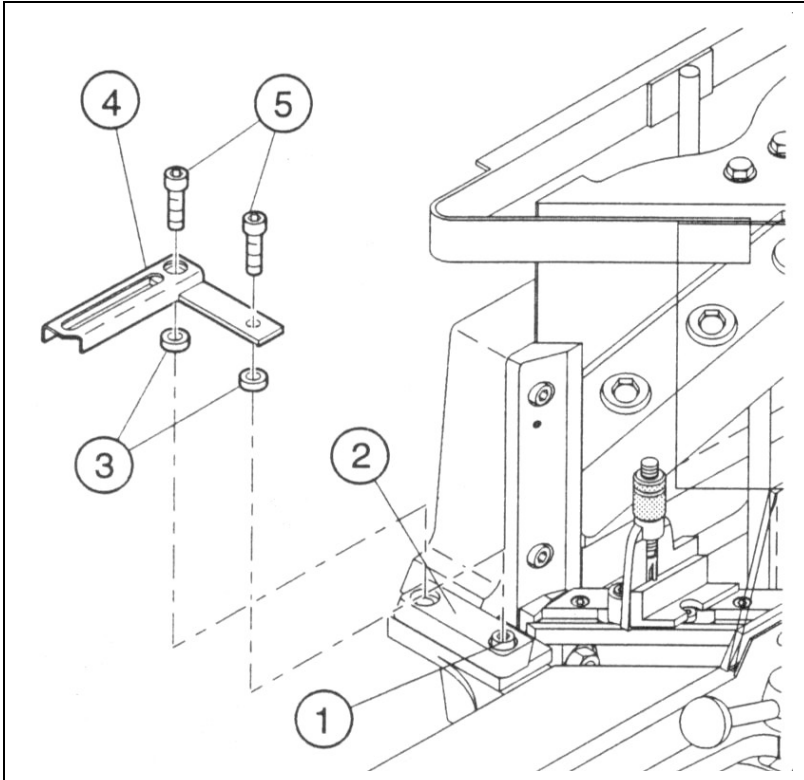
During the cutting cycle when the knives are manually moved forward the rebate supports will automatically move in sequence.

When the cutting cycle is finished, and the knives are returned to the rearmost position, the automatic rebate supports also return in unison, ready to accept the next work piece.

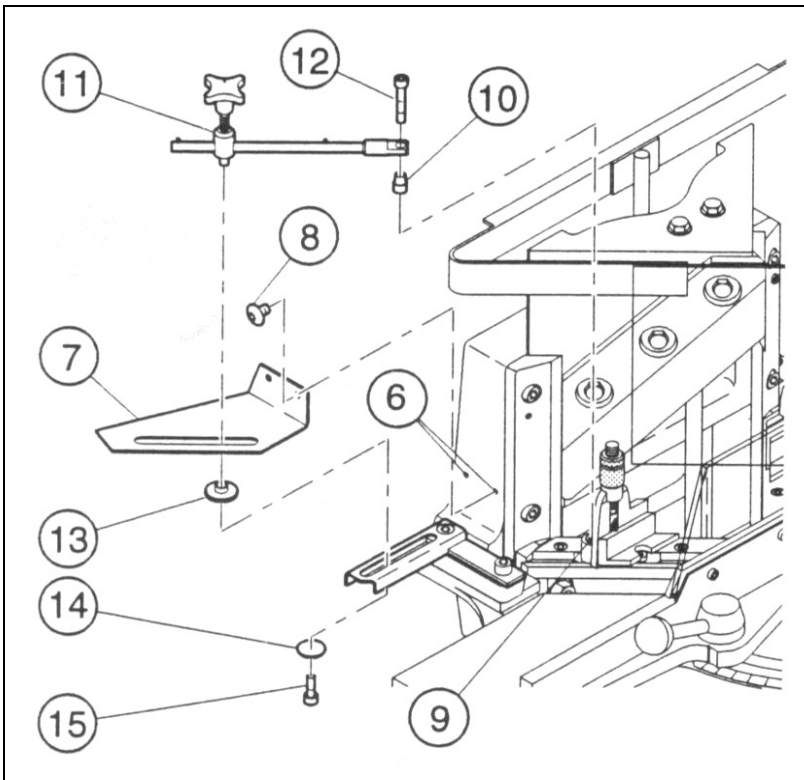


Beware of the extremely sharp knives

Installation Instructions



L-1-2



L-1-2-1

Installation Instructions

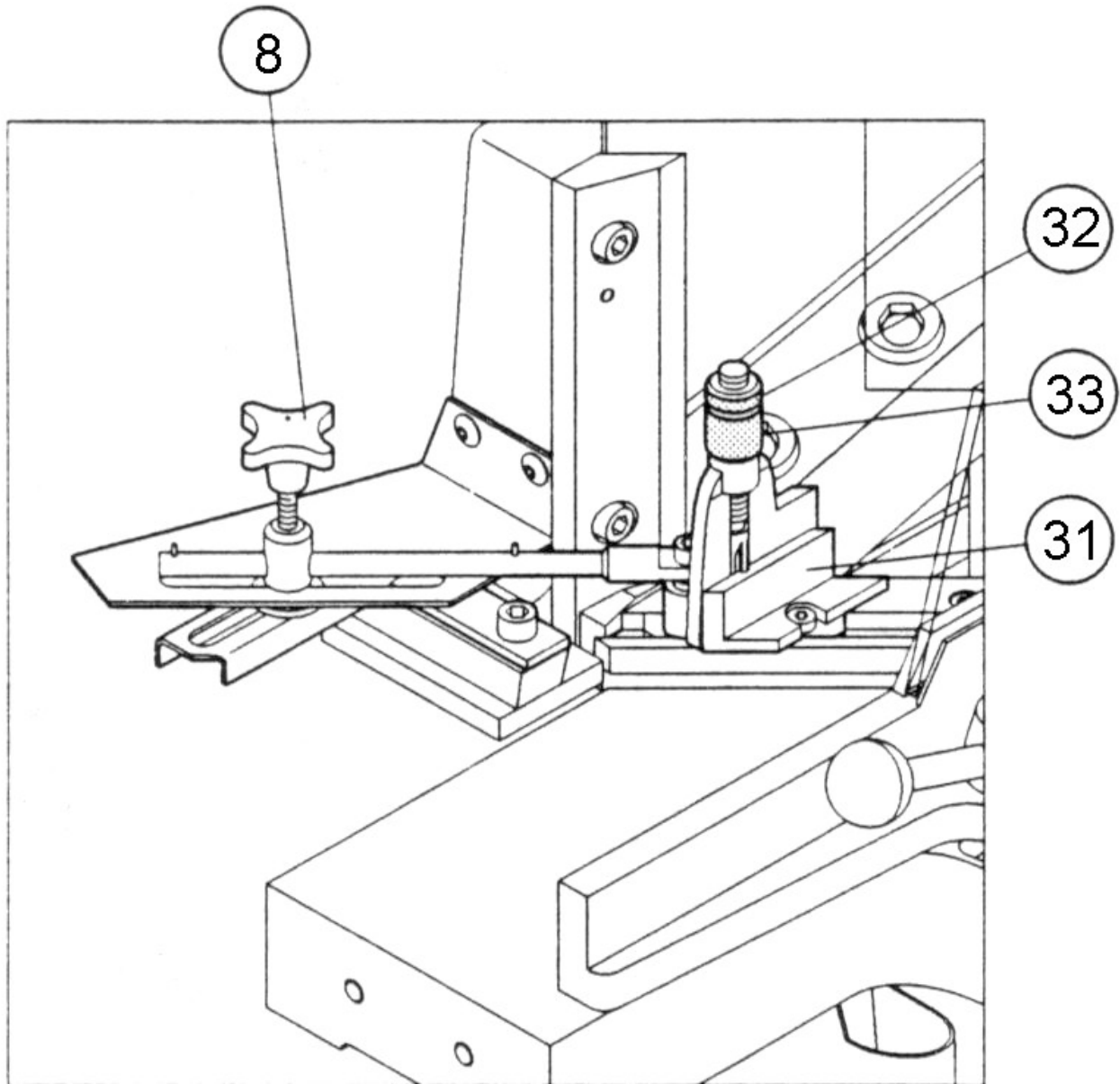
Install the attachment on the left side first.

1. The knife block unit must be in the rearmost position and locked in the bottom position.
Under no circumstances must the knife block be moved during the installation of the automatic rebate support system.
2. Remove the screws (1) from the short guide rail (2). The screws (1) are replaced by screws (5).
3. Locate bushes (3) in the borings on the short guide rail (2). If the bushes (3) do not protrude above the borings put one of the included four washers (not shown on the drawing) under each bush.
4. Install the bottom part (4) on the short guide rail (2) with the screws (5).
5. The screws (5) are screwed in so that there is a distance of about 0.1 mm between the slide frame and the short guide rail (2).
6. Repeat this process for the right hand side of the attachment.
7. Place the included distance piece (PVC) on top of the bottom part (4), (covering the slider hole) Place the top plate (7) on top of the distance piece, and locate the front edge of the vertical side of the top plate, so that it is in line with the gap between the slide frame and the long guide. Mark and drill the two holes (6) 4.2 mm (drill bit included) in the slide frame according to the holes in the top plate (7) (depth of holes approximately 15 mm).
NOTE: On machines delivered after 1995.02.01 the holes are already pre-drilled.
8. Secure the top plate (7) to the slide frame with the two self tapping screws (8).
9. Remove screw (9) in the rebate support and put in the spacer bush (10).
10. Install the draw bar (11) with the screw (12) - the draw bar holder must slide in the slot on both the top plate (7) and the bottom part (4).
11. Place the slide bar (13) between the top plate (7) and the bottom part (4).
12. Locate the washer (14) with the screw (15).



Beware of the extremely sharp knives

Adjustment of Rebate Supports



Adjustment of Rebate Supports

The knife block must be in the topmost position during the adjustment.

The rebate supports are only used when cutting mouldings which have a rebate.

To adjust the rebate support to the current work piece, the star wheel (8) and knurled lock nuts (32) are loosened.

Place the moulding in the machine. Slide the rebate supports (31) into the rebate of the moulding.

Press the moulding down on the machine table.

The height of the rebate supports is adjusted by means of the knurled nut (33). The rebate supports must be adjusted so that there is approx. 0.5 mm clearance between the rebate of the moulding and the support.

After the adjustment the knurled lock-nuts (32) are tightened.

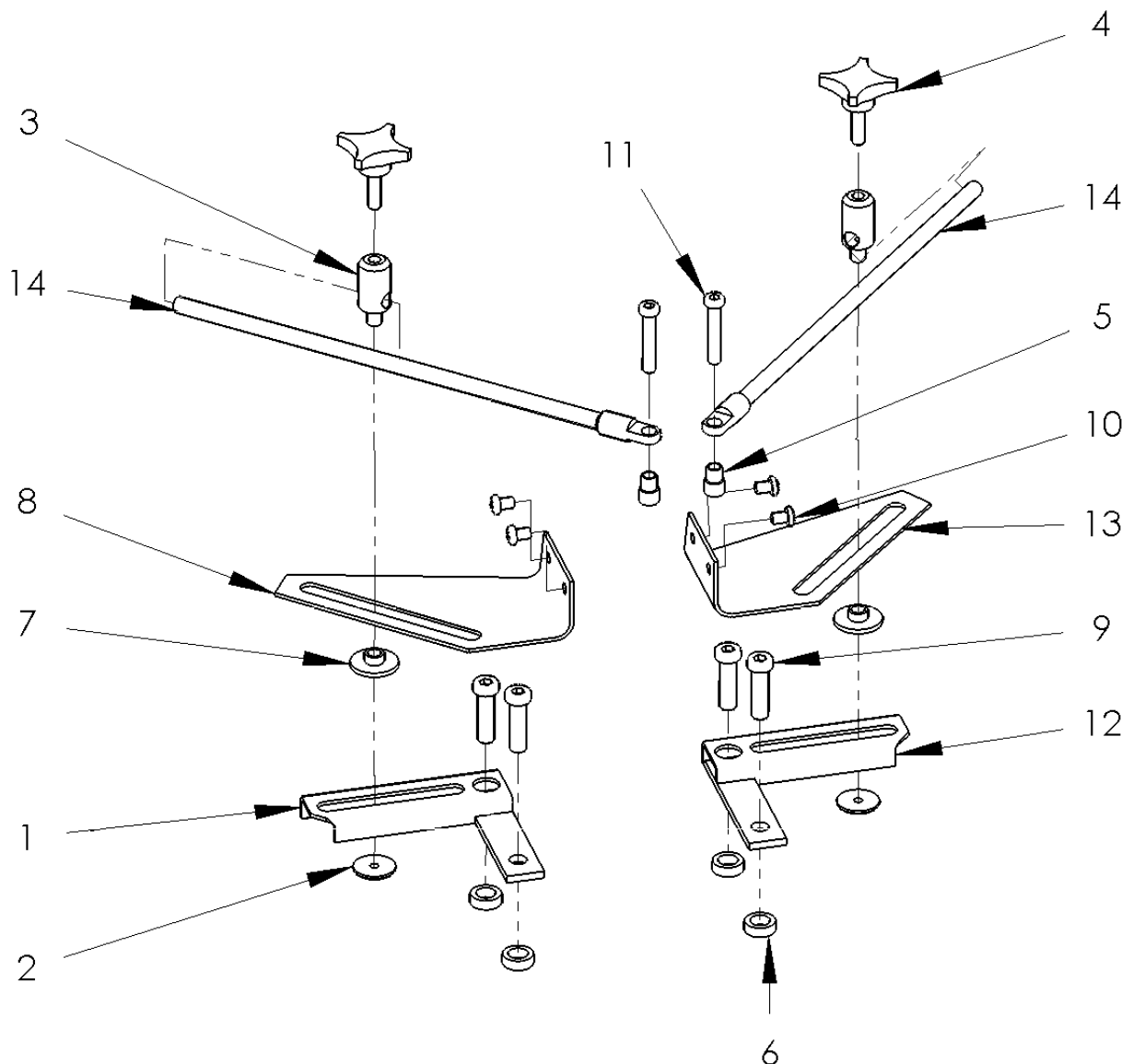
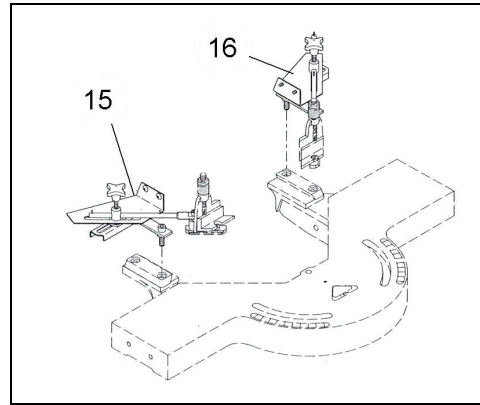
The rebate support draw bars are locked in position with star wheel (8) so that they have a clearance of about 0.5 mm from the moulding.

If desired, the rebate supports can be removed from the machine when the knife block is in the rearmost position.



Beware of the extremely sharp knives

Accessories- Automatic Rebate Supports. Zusatzausrüstung Falzauflagen, autom.



Accessories- Automatic Rebate Supports. Zusatzausrüstung Falzauflagen, autom.

Pos.	Art. No.	Designation	Bezeichnung
1	DAN05000121V	Bottom Part	Unterteil
2	DAN05000125	Washer	Unterlegscheibe
3	DAN05000123	Holder	Halter
4	DAN60785007	Star Wheel	Sterngriff
5	DAN05000127	Spacing bush	Buchse
6	DAN05000126	Bushes	Buchse
7	DAN05000124	Slide Bush	Gleitstück
8	DAN05000120V	Top Plate	Oberplatte
9	DAN50008030	Cylinder Screw	Zylinderschraube
10	DAN49005008	Screw	Schraube
11	DAN50006035	Cylinder Screw	Zylinderschraube
12	DAN05000121H	Bottom Part	Unterteil
13	DAN05000120H	Top Plate	Oberplatte
14	DAN05000122	Draw Bar	Verbindungsstange
15	DAN0900 V	Automatic Rebate Support, complete, left hand	Falzauflage, Automatik Komplett, links
16	DAN0900 H	Automatic Rebate Support, complete, right hand	Falzauflage, Automatik Komplett, rechts